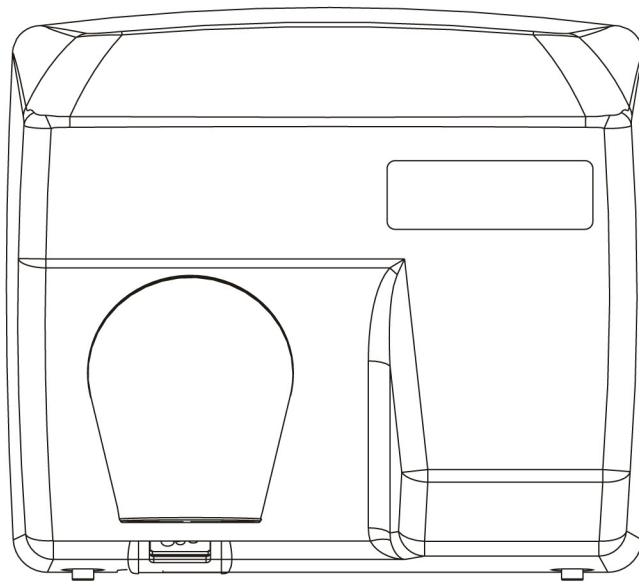


PALMER  
FIXTURE

# Hand dryer

## Conventional Series



## Automatic

HD901 WH  
HD901 XS  
HD901 SS

# Hand Dryer Operating Instructions and Parts Manual

## Surface Mount & Revolving Nozzle

### Description:

Automatic operation hand dryer.

Casing : HD901 WH- Steel cover; 2.0 mm thick, Porcelain enameled coating.

HD901 XS - Steel cover; 2.0 mm thick, Brite Stainless Steel

HD901 SS - Steel cover; 2.0 mm thick, Stainless Steel

Brush motor : 1/4HP, 200W, 5500 R.P.M.

Designed with 221°F (105°C) thermostat.

Heater assembly : Designed with 149°F (65°C) thermostat, 1800-2200W.

Air speed : 63 mi/hr (28 m/s).

Dryer shall deliver : 202 CFM (345 m³/h).

Air output Temperature : 137.4°F (53°C) – Ambient Temp. 68°F (20°C).

Sound level : 70±3 dB.

Approximately 20-25 seconds drying time.

Adjustable sensitive distance of sensor from 2" to 13" (51 mm to 330 mm).

Power cut off automatically in case of irregular use over 60 seconds. - **AUTOMATIC**

Adjustable timer control range from 20 to 55 seconds. - **PUSH-BUTTON**

2 vandal-proof lock screws and key wrench.

Drip proof : IPX1

Nozzle : Nozzle in chrome plated zinc.

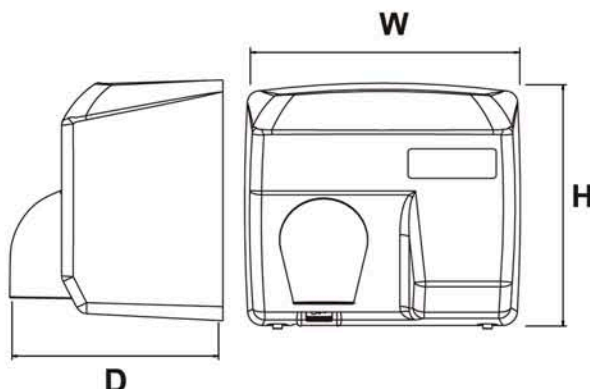
Weight : 15.4 lbs (7.0 kgs) unpacked ; 16.5 lbs (7.5 kgs) packed. - HD901 WH/XS/SS

The nozzles come in the fixed position for the automatic units and the swivel position for the push button units, but that they can be adjusted in the field by removing the screw in the case of the automatic units and adding the screw (available from your dealer) in the case of the swivel units.

Certification:     **RoHS WEEE**

## Specifications and Dimensions

Model #	Volts	Watts	Amps	Housing Dimensions: in (mm)		
				W	H	D
HD901	110-120Vac	2.0-2.4kw	18.3-20A	11-3/16"(284 mm)	9-3/4"(248 mm)	8"(202 mm)
WH/XS/SS	220-240Vac	2.0-2.4kw	9.2-10A			



## General safety information

**▲ WARNING** *Disconnect power before installation or servicing.*

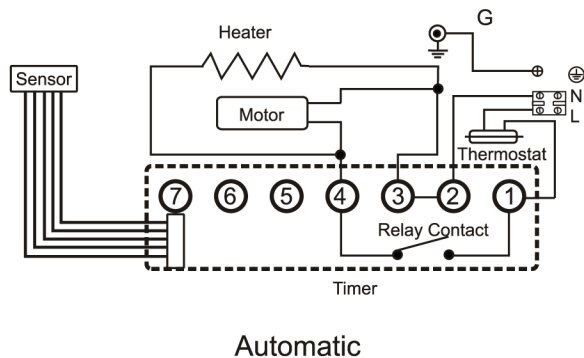
**▲ WARNING** *This product intended for installation by a qualified service person. Use AWG NO. 12 solid conductor for wiring.*

**▲ WARNING** *All units must be supplied with a 3-wire service. The ground wire must be connected to the dryer's backplate.*

**▲ DANGER** *Failure to properly ground unit could result in severe electrical shock and/or death.*

NOTE: Do not install dryer over washbasin.

## Wiring Diagram



## Installation

1. Fix the position card on the wall.  
Suitable height for hole "D" is 50" (130 cm) from ground.
2. Drill 4 holes  
(A. B. C. D. 5/16" (8 mm) diameter: 3/8" (35 mm) depth.)
3. Take off the mounting instruction sheet.  
Hammer dowels into 4 holes.
4. Remove the housing from the base plate; fix the base plate firmly on to the wall.
5. Connections:
  - A. Connect the live wire (colored red or brown) to the terminal block marked "L".
  - B. Connect the neutral wire (colored black or blue) to the terminal block marked "N".
  - C. Connect the ground wire (colored green and yellow) to the green screw marked "⊕".
6. Attach housing back to base plate.

## Operation

Shake excess water from hands.  
Place hands under the outlet to start operation.  
Rub hands lightly and rapidly.  
Stops automatically when hands are removed.

## Maintenance

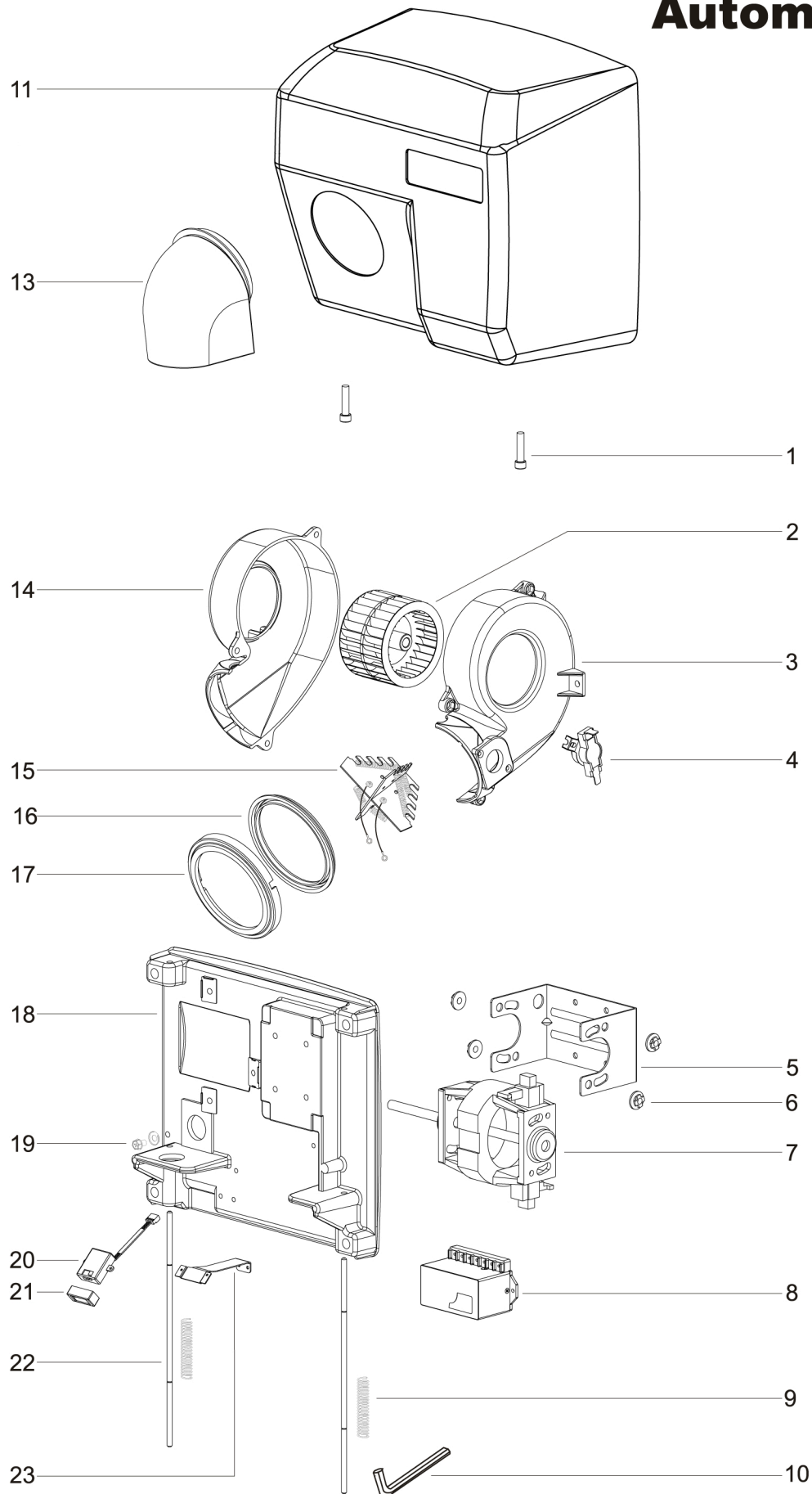
Easy to maintain. If the surface is dirty or dusty just wipe to clean.

## Trouble shooting Chart

Symptom	Corrective Action
Blower motor stops running	Turn off power to the dryer at electrical panel. Remove cover. Check all wiring connections from terminal board to the motor. Check blower wheel and spin to make sure it rotates freely: Look for objects blocking the free movement. Replace cover and turn on power to the hand dryer. If motor fails to start, have a qualified electrician check the Push-On-Switch, thermostat, motor and capacitor for proper operation. Replace if necessary.
Dryer blows cold air	Turn off power to the dryer at the electrical panel. Remove cover. Check all wiring connections to make sure all terminals are firmly mounted in place and the wire insulation is in good condition. Have a qualified electrician check the thermal cut off and heating element. Replace cover, turn on power to the hand dryer. If dryer continues to blow cold air, replace defective thermal cut off and/or heating element.
Dryer does not respond to hand movement	Make sure power is on and available to the unit. Place hands under sensor. A clicking sound indicates sensor is functioning properly. No clicking sound would indicate a bad sensor and/or contactor. Replace if necessary.
Dryer will not shut off or will not run for a complete cycle	Replace timer assembly



## Automatic



## Automatic

### Repair parts list

Reference Number	Description	Part #	Qty.
1	Fix screw	D16-0001	2
2	Fan blower	C16-0001	1
3	Blower housing B	A26-0002	1
4	Thermostat	E66-0001	1
5	Motor mounting bracket	C16-0002	1
6	Motor rubber	G16-0002	4
7	Motor		1
	1/4HP@120VAC	E16-0001	
	1/4HP@240VAC	E16-0002	
8	Timer assembly		1
	120VAC	TIA01	
	240VAC	TIA02	
9	Fix shaft spring	R16-0001	2
10	L Key	D16-0002	1
11	Cover		1
	HD901SS	C16-2002	
	HD901XS	C16-2001	
	HD901WH	C16-3001	
13	Air outlet	B16-0002	1
14	Blower housing A	A26-0001	1
15	Heater assembly		1
	2200W@120VAC	T26-0001	
	2200W@240VAC	T26-0002	
16	Air outlet rubber ring	G16-0001	1
17	Air outlet holder	B16-0004	1
18	Base plate	B16-0001	1
19	Grounding screw	D01-002	1
20	Sensor	F02-003	1
21	Sensor rubber	G26-0003	1
22	Fix shaft	D16-0003	2
23	Sensor mounting bracket	C16-0003	1